



INF-V4

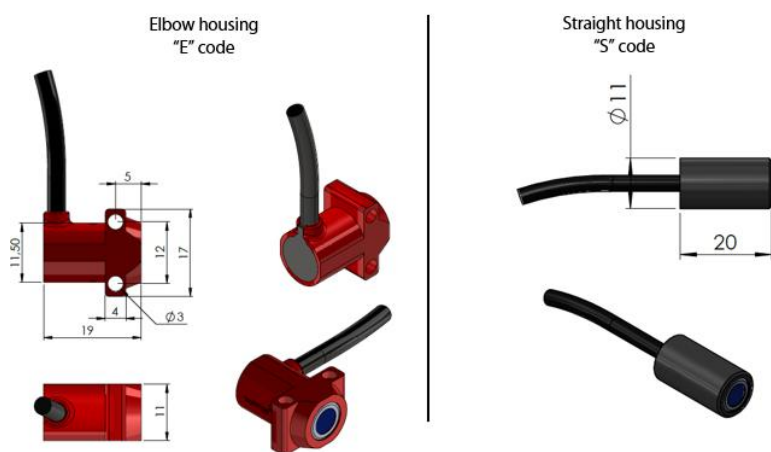
Infrared Temperature Sensor

Measurement features			
Available ranges		500, 1000, 1200 or 1300	°C
Response time		50	ms
Sensitive Element		Thermopile with silicon lens	
Wave Length		8 to 14	μm
Measurement distance		20 to 100	mm
Field of view (90% radiation)		5:1 at 50mm	
Calibrator Reference	500°C range	Land P550P	
	Other ranges	Land R1200P	
Calibrator Emissivity		99%	
Electrical features			
Supply Voltage	5V version ⁽¹⁾	5.000±0.020	V
	12V version	6 to 16	V
Supply Current		1.5	mA
Protection		Reverse voltage and short circuit protection	
Output signal		0-5	V
Mechanical features			
Dimensions		See drawings	
Material		Aluminum	
Weight (without cable)		6	g
Environment			
Protection		IP64	
Vibration test		20Gpp 5'	
Shock		500	G
Operating Temperature	5V version	-20 to +200 ⁽²⁾	°C
	12V version	-20 to +180	
Storage Temperature		-40 to +150	°C

(1) The 5V version is not regulated. Offset ($V_{25^{\circ}\text{C}}$ value) is ratiometric with supply voltage.

(2) 1000 hours max above 180°C.

Mechanical drawing



Ordering information

Ordering ref:

INF - Range - V4 - Housing - Supply

500: 500°C range

1000: 1000°C range

1200: 1200°C range

1300: 1300°C range

5V: 5V supply

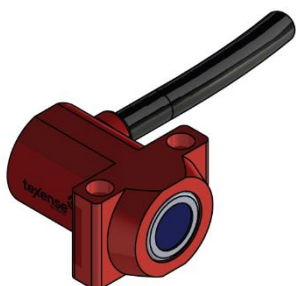
12V: 12V supply

E: Elbow housing

S: Straight housing

ex: INF-1000-V4-E-12V

Elbow housing



Straight housing

